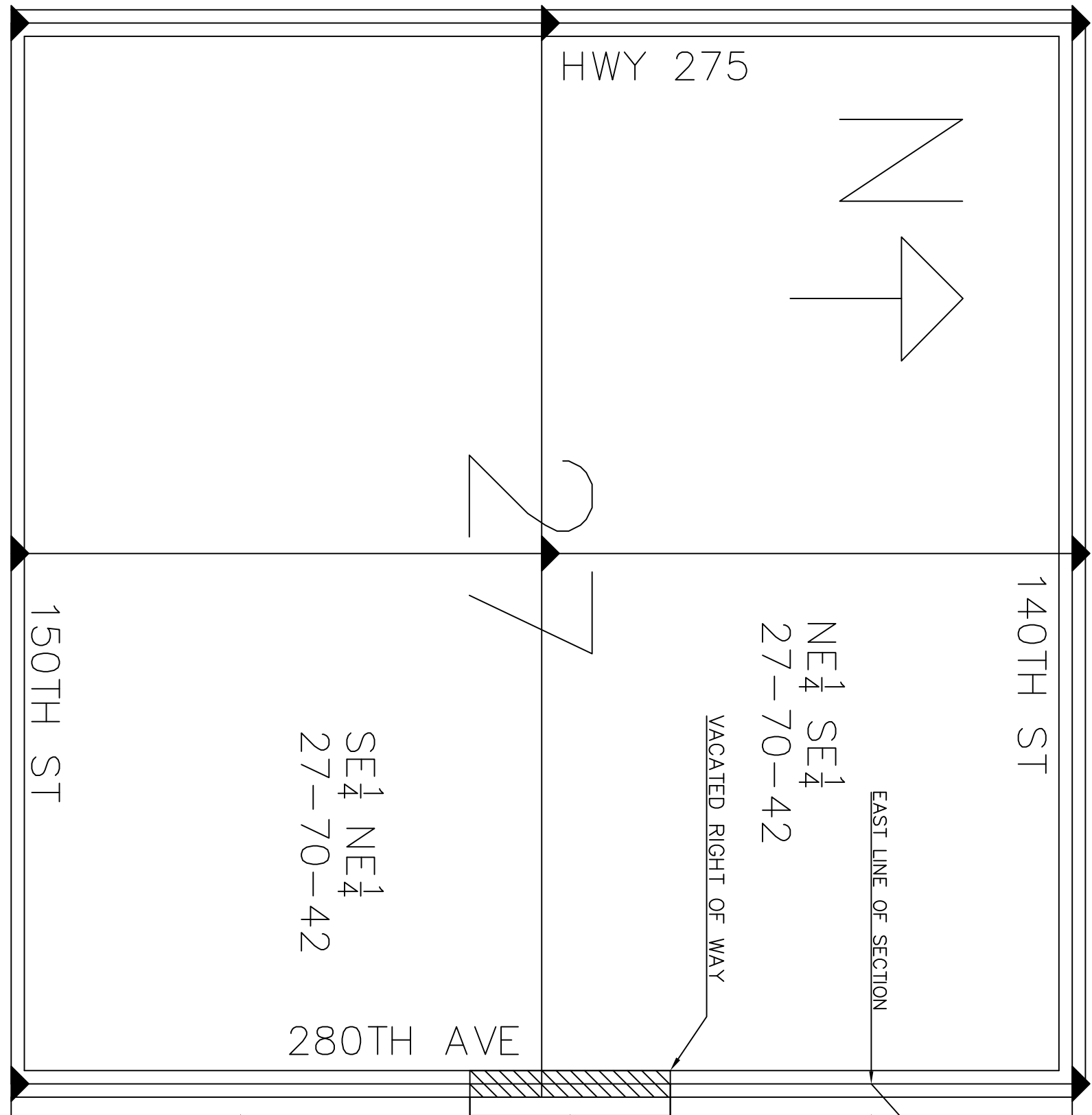


Prepared by: Daniel R. Davis
 ROAD VACATION PLAT
 EXHIBIT A



2290'
 990'
 2000'
 140TH ST
 280TH AVE
 150TH ST
 NE 1/4 SE 1/4
 27-70-42
 SE 1/4 NE 1/4
 27-70-42
 NW 1/4 SE 1/4
 26-70-42
 SW 1/4 NE 1/4
 26-70-42

ROAD VACATION PLAT 280TH AVENUE
 LOCATED IN PART OF SECTION 27-70-42 FREMONT COUNTY, IOWA
 Scale: DO NOT SCALE DATE AUGUST 2016 DRAWN BY: DRD
 FREMONT COUNTY ENGINEER
 2014 290TH AVENUE SIDNEY, IOWA 51652
 PH: 712-374-2613

LEGAL DESCRIPTION:
 A PORTION OF 280TH AVENUE, ORIGINALLY ESTABLISHED AS ROAD NO. 405 (BOOK 4, PAGE 114) ESTABLISHED ON AUGUST 1, 1889 LYING ON THE EAST LINE OF SECTION 27, T70N, R42W OF THE 5TH PM, FREMONT COUNTY, IOWA. THE INTENTION OF THIS ROAD CLOSURE IS TO VACATE A PORTION OF THE PUBLIC ROAD AS NOW ESTABLISHED (ORIGINAL AND WITH MODIFICATIONS) COMMENCING AT A POINT 2290 FT NORTH OF THE SE CORNER OF SECTION 27, T70N, R42W BEING THE POINT OF BEGINNING; THENCE NORTH ALONG THE EAST LINE OF SAID SECTION 27 A DISTANCE OF 990 FT AND TERMINATING AT A POINT 2000 FT SOUTH OF THE NE CORNER OF SECTION 27, T70N, R42W OF THE 5TH PM, FREMONT COUNTY, IOWA.